

CENTERLINE SURVEY PLAT

INTERSTATE ROUTE 70 SEC. 6.25

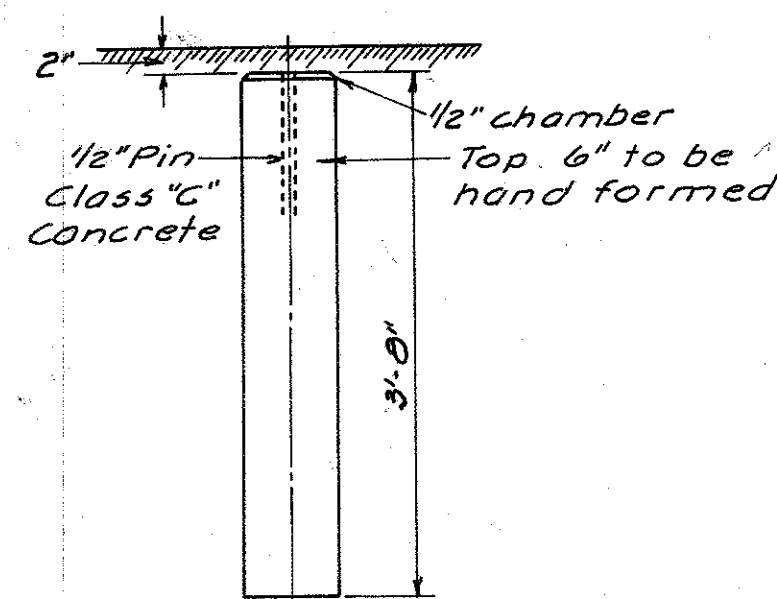
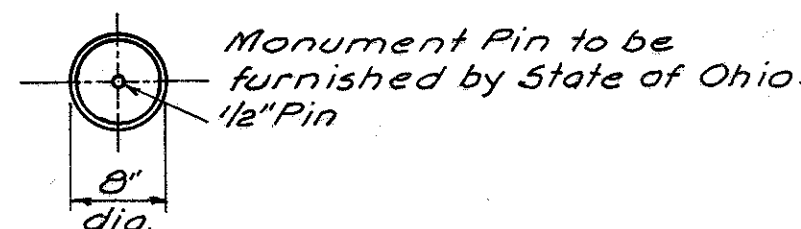
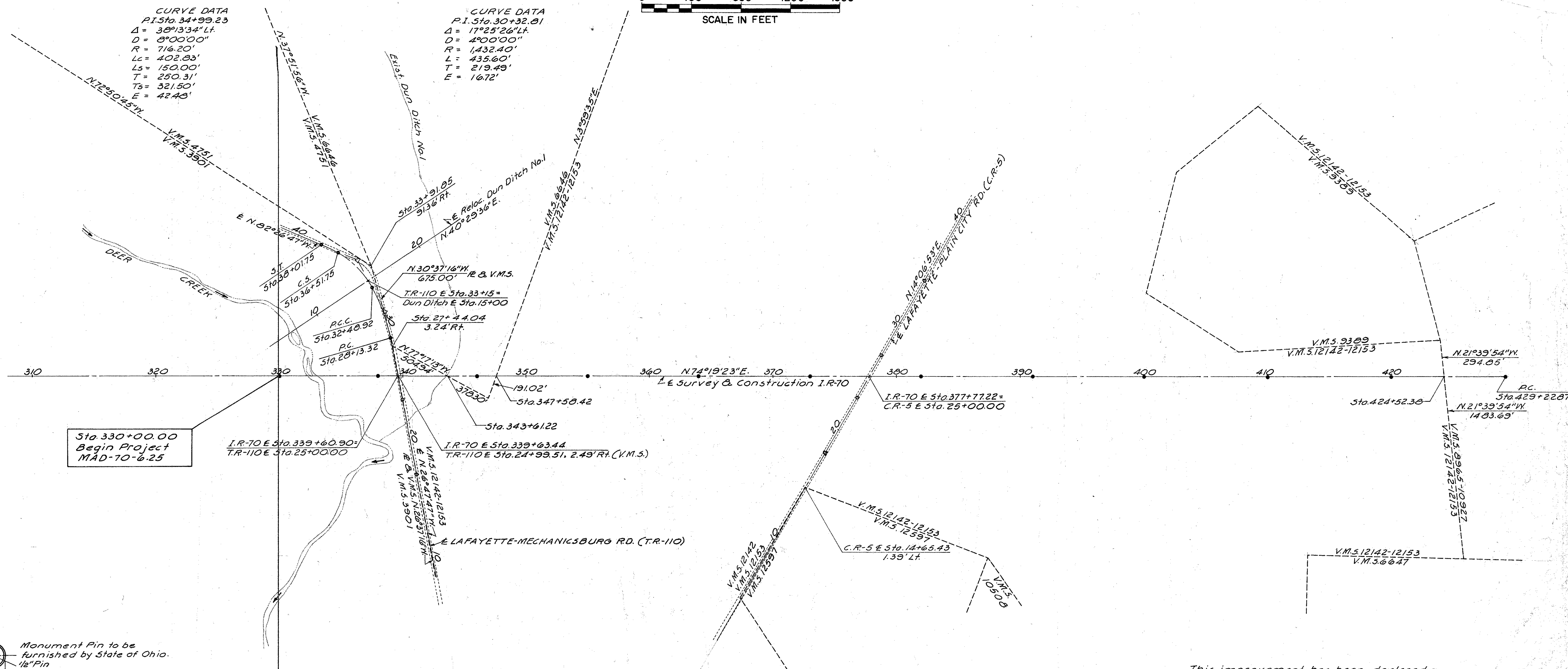
DEER CREEK TOWNSHIP, MADISON COUNTY, OHIO

VIRGINIA MILITARY SURVEY

FED. RD. DIVISION	STATE	PROJECT	
2	OHIO		

338
374

1
37



DETAIL OF CONCRETE MONUMENT

LEGEND
 • - Concrete Monuments
 ○ - Monument Assemblies

CONCRETE MONUMENTS TO BE PLACED ON CENTERLINE AT FOLLOWING LOCATIONS DURING CONSTRUCTION (I.R-70)

P.O.T. Sta. 330+00.00	P.O.T. Sta. 382+00.00
P.O.T. Sta. 338+00.00	P.O.T. Sta. 391+00.00
P.O.T. Sta. 346+00.00	P.O.T. Sta. 400+00.00
P.O.T. Sta. 355+00.00	P.O.T. Sta. 410+00.00
P.O.T. Sta. 364+00.00	P.O.T. Sta. 420+00.00
P.O.T. Sta. 373+00.00	

MONUMENT ASSEMBLIES TO BE PLACED ON CENTERLINE AT FOLLOWING LOCATIONS DURING CONSTRUCTION (SIDE ROADS)

T.R-110	CR-5
P.O.T. Sta. 16+85.00	P.O.T. Sta. 17+84.53
P.O.T. Sta. 23+00.00	P.O.T. Sta. 23+00.00
P.C. Sta. 28+13.32	P.O.T. Sta. 27+00.00
P.C.C. Sta. 32+48.92	P.O.T. Sta. 34+00.00
C.S. Sta. 36+51.75	
S.T. Sta. 38+01.75	

This improvement has been declared a Limited Access Highway from Station 0+00.00 to Station 822+43.32 by action of the Director of Highways on Dec. 13, 1965 and Recorded in Volume 47, Page 1341 of the Directors Journal, Pursuant to Law.

I hereby certify that this Plat is a true Delineation of a Survey made for the Ohio Department of Highways in 1965 by Franklin Engineering Limited, Columbus, Ohio.

Benny L. Kump Date July 27, 1966
 Reg. Sur. No. 5219

Signed Frank M. Williams
 Date _____ Division Deputy Director

CENTERLINE SURVEY PLAT

INTERSTATE ROUTE 70 SEC. 6.25

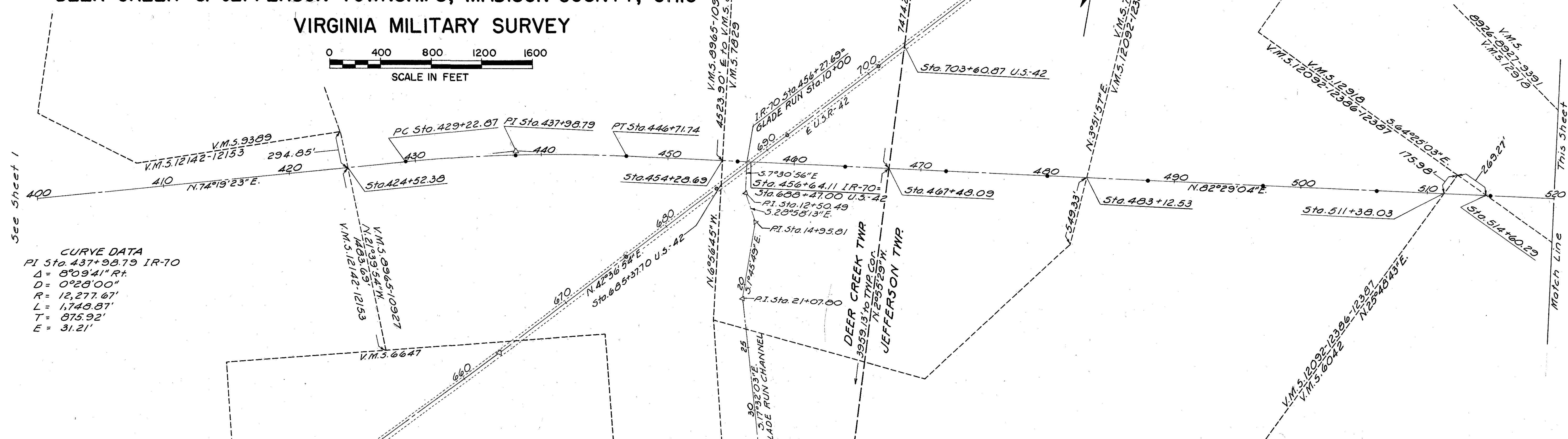
DEER CREEK & JEFFERSON TOWNSHIPS, MADISON COUNTY, OHIO

VIRGINIA MILITARY SURVEY

FED. RD. DIVISION	STATE	PROJECT
2	OHIO	

339
374

2
37



CURVE DATA
 PI Sta. 437+98.79 IR-70
 $\Delta = 8^{\circ}09'41''$ R.
 $D = 0^{\circ}28'00''$
 $R = 12,277.67'$
 $L = 1,749.87'$
 $T = 875.92'$
 $E = 31.21'$

SER. RD. CURVE DATA
 PI Sta. 531+46.27
 $\Delta = 68^{\circ}30'51''$ R.
 $D = 57^{\circ}17'45''$
 $R = 100'$
 $L = 119.58'$
 $T = 68.11'$
 $E = 20.92'$
 PC Sta. 530+78.16
 PT Sta. 531+97.74

SER. RD. CURVE DATA
 PI Sta. 535+84.61
 $\Delta = 45^{\circ}00'00''$ L.
 $D = 28^{\circ}00'00''$
 $R = 204.63'$
 $L = 160.71'$
 $T = 84.76'$
 $E = 16.86'$
 PC Sta. 534+99.85
 PT Sta. 536+60.56

SER. RD. CURVE DATA
 PI Sta. 538+53.00
 $\Delta = 42^{\circ}04'44''$ R.
 $D = 20^{\circ}00'00''$
 $R = 286.48'$
 $L = 210.39'$
 $T = 110.20'$
 $E = 20.46'$
 PC Sta. 537+42.80
 PT Sta. 539+53.19

SER. RD. CURVE DATA
 PI Sta. 546+75.89
 $\Delta = 27^{\circ}25'44''$ L.
 $D = 6^{\circ}00'00''$
 $R = 954.93'$
 $L = 457.15'$
 $T = 233.04'$
 $E = 28.03'$
 PC Sta. 544+42.05
 PT Sta. 549+00.00

LEGEND
 • Concrete Monuments
 - Monument Assemblies

CONCRETE MONUMENTS TO BE PLACED ON CENTERLINE AT FOLLOWING LOCATIONS DURING CONSTRUCTION (I.R.-70)

PC Sta. 429+22.87	ROT Sta. 506+00.00
POC Sta. 437+97.30	ROT Sta. 515+00.00
PT Sta. 446+71.74	ROT Sta. 524+00.00
ROT Sta. 455+00.00	ROT Sta. 533+00.00
ROT Sta. 464+00.00	ROT Sta. 542+00.00
ROT Sta. 472+00.00	ROT Sta. 551+00.00
ROT Sta. 480+00.00	ROT Sta. 560+00.00
ROT Sta. 488+00.00	ROT Sta. 569+00.00
ROT Sta. 497+00.00	ROT Sta. 577+00.00

MONUMENT ASSEMBLIES TO BE PLACED ON CENTERLINE AT FOLLOWING LOCATIONS DURING CONSTRUCTION (SIDE ROADS)

U.S.R.-42	S.R.-29
ROT Sta. 676+00.00	ROT Sta. 550+00.00
ROT Sta. 685+00.00	ROT Sta. 558+00.00
ROT Sta. 692+00.00	ROT Sta. 566+00.00
ROT Sta. 701+00.00	PI Sta. 574+20.11
	ROT Sta. 577+00.00
Service Rd.	
PC Sta. 530+78.16	Byerly Rd. T.R.-115
PT Sta. 531+97.74	ROT Sta. 522+00.00
PC Sta. 534+99.85	PC Sta. 524+27.01
PT Sta. 536+60.56	ROT Sta. 530+68.98
PC Sta. 537+42.80	PT Sta. 537+10.96
PT Sta. 539+53.19	ROT Sta. 543+00.00
PC Sta. 544+48.85	PC Sta. 550+71.26
PT Sta. 549+00.00	PT Sta. 552+19.20
ROT Sta. 556+00.00	
ROT Sta. 562+00.00	
ROT Sta. 569+00.00	

RECORDED IN PLAT BOOK 2 PAGE 89 DATE 9-15-66
 RE-RECORDED IN PLAT BOOK PAGE DATE

This improvement has been declared a Limited Access Highway from Station 0+00.00 to Station 822+43.32 by action of the Director of Highways on Dec. 13, 1962 and Recorded in Volume 47, Page 1341 of the Directors Journal, Pursuant to Law.

I hereby certify that this Plat is a true Delineation of a Survey made for the Ohio Department of Highways in 1966 by Franklin Engineering Limited, Columbus, Ohio.
 Henry L. Rung Date July 27, 1966
 Reg. Sur. No. 5219

Signed Frank M. Williams
 Date _____ Division Deputy Director

10-26-67 Revised curve data on service road at P.I. station 531+46.27.

T.R.-115 (CR-102) CURVE DATA
 PI Sta. 531+87.10
 $\Delta = 77^{\circ}02'14''$ R.
 $D = 6^{\circ}00'00''$
 $R = 954.93'$
 $L = 1,283.95'$
 $T = 760.09'$
 $E = 265.58'$
 PC Sta. 524+27.01
 PT Sta. 537+10.96

T.R.-115 (Reloc.) CURVE DATA
 PI Sta. 531+51.87
 $\Delta = 56^{\circ}30'28''$ L.
 $D = 38^{\circ}11'50''$
 $R = 150.00'$
 $L = 147.94'$
 $T = 80.61'$
 $E = 20.29'$
 PC Sta. 530+71.26
 PT Sta. 532+19.20

S.R.-29 (Reloc.) CURVE DATA
 PI Sta. 574+20.11
 $\Delta = 3^{\circ}59'49''$ R.
 $D = 1^{\circ}30'00''$
 $R = 3,819.72'$
 $L = 266.46'$
 $T = 133.29'$
 $E = 2.32'$
 PC Sta. 572+86.82
 PT Sta. 575+53.28

[illegible]

PROPERTY MAP

0 400 800 1200 1600
SCALE IN FEET

FED. RD. DIVISION	STATE	PROJECT
2	OHIO	MAD-70-6.25 LIMITED ACCESS

340
374
37

DEER CREEK
LAFAYETTE-MECHANICSBURG RD.
MARIE BROWN CAREN
PEARLE HARPER Res.-111.56 Ac.
KATHARINE HIGGINS Res.-59.450 Ac.
HELEN C. SLAGLE Res.-80.25 Ac.
LOUISE & DEANE M. RICHMOND Res.-47.35 Ac. in 2nd Tract
Res.-25.51 Ac.
Res.-10.75 Ac.
Res.-29.51 Ac.
Res.-11.650 Ac.
GLADYS CAMPBELL (Life Estate) Res.-49.906 Ac.
LOUISE & DEANE M. RICHMOND (Life Estate) Res.-73.80 Ac.
PEARLE HARPER Res.-183.52 Ac.

Sta. 315+33.83
End Acquisition for CLA-70-29.19
MAD-70-0.00
I-70-3(8) RIW & RE

Sta. 315+33.83
Begin Acquisition for MAD-70-6.25
I-70-3(8) RIW & RE

Sta. 330+00
End Project for CLA-70-29.19
MAD-70-0.00
I-70-3(25)69

Sta. 330+00
Begin Project for MAD-70-6.25
I-70-3(9)75

SEE SHEETS 9, 34 FOR RECORDED DATA
SEE SHEETS 9, 10, 35 FOR RECORDED DATA

TR 110

PROPERTY MAP

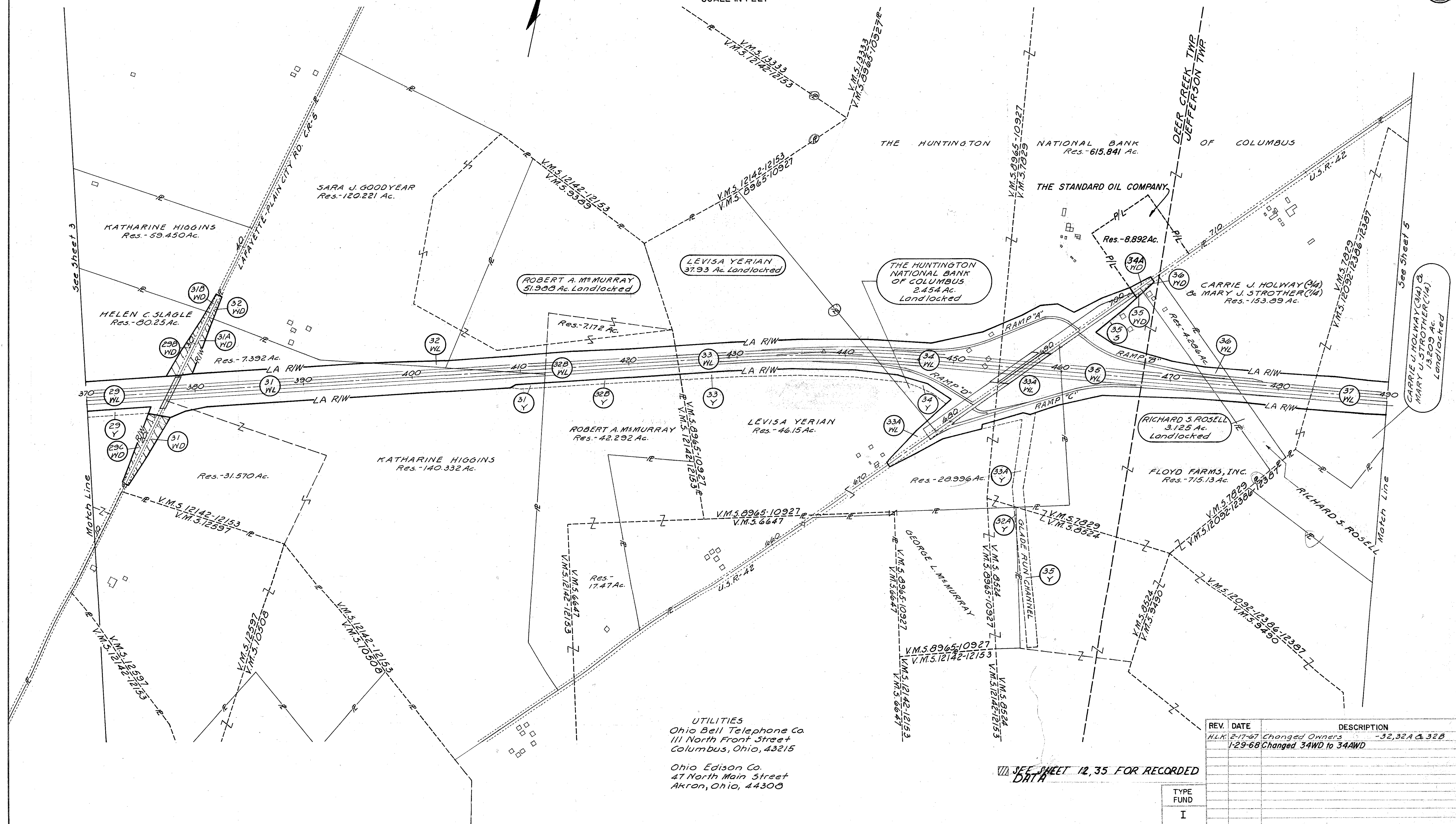
0 400 800 1200 1600
SCALE IN FEET

FED. RD. DIVISION	STATE	PROJECT
2	OHIO	

MADISON COUNTY
MAD-70-6.25
LIMITED ACCESS

341
374

4
37



PROPERTY MAP

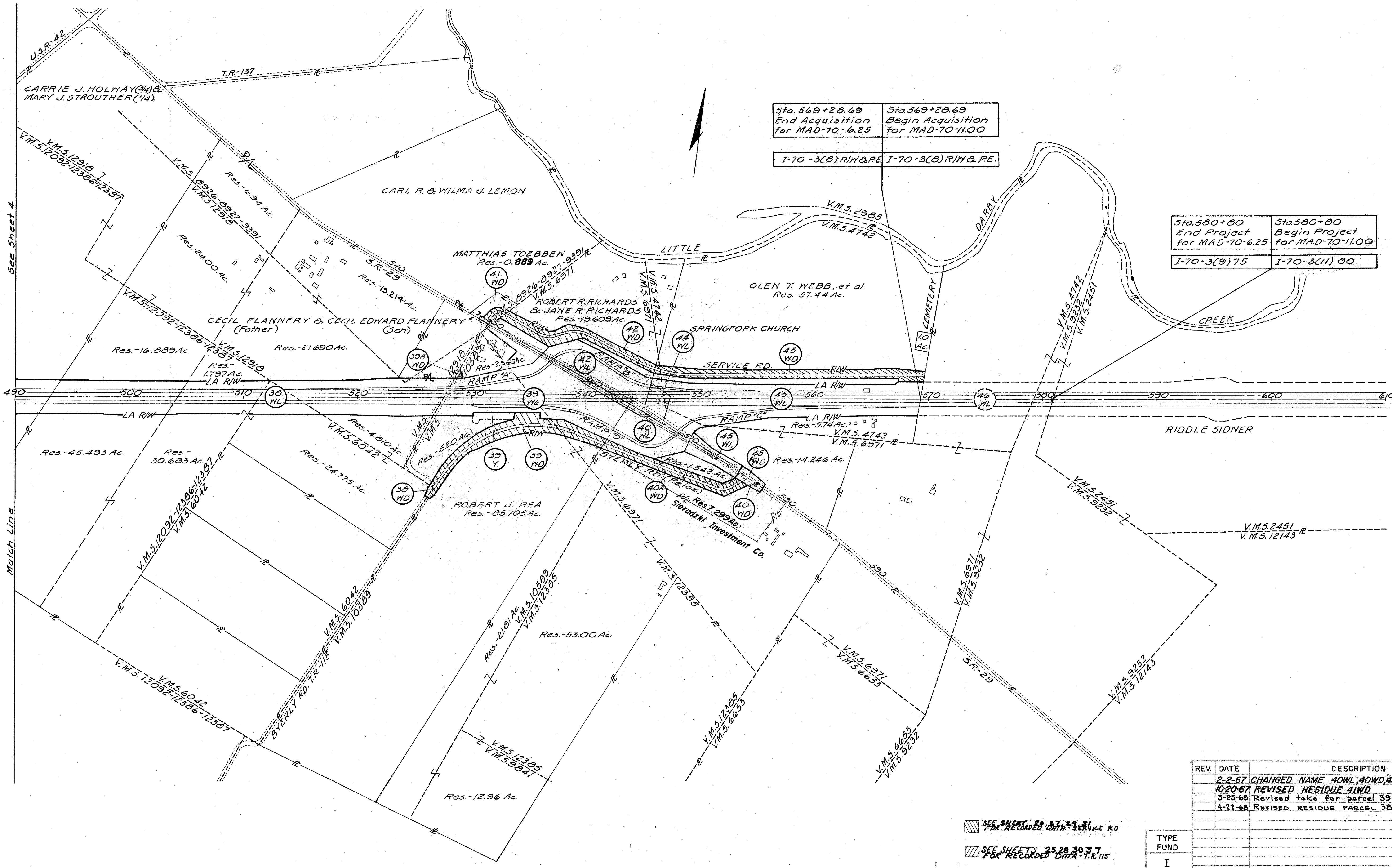


FED. RD. DIVISION	STATE	PROJECT
2	OHIO	

MADISON COUNTY
MAD-70-6.25
LIMITED ACCESS

342
374

5
37



SUMMARY OF ADDITIONAL RIGHT OF WAY REQUIRED

FED. RD. DIVISION	STATE	PROJECT	
2	OHIO		

MADISON COUNTY
MAD-70-6.25
LIMITED ACCESS

343
374

6
37

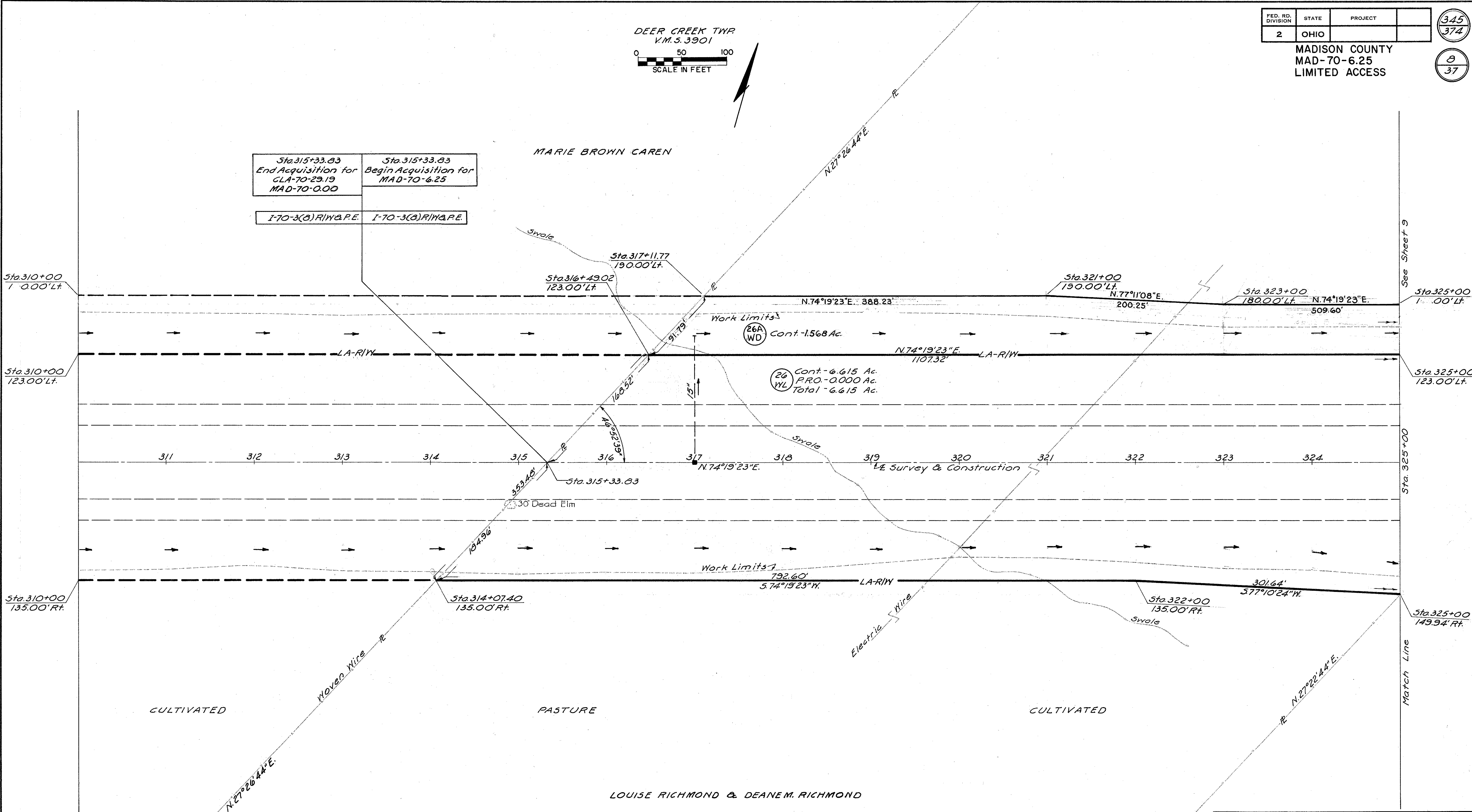
NO. OF BUILDINGS--- 4
NO. OF PROPERTIES-- 19
NO. OF PARCELS---- 85

PARCEL NO.	OWNER	TYPE FUND	RECORDED		DEED AREA	TOTAL P.R.O.	TOTAL TAKE	P.R.O. IN TAKE	NET TAKE		NET RESIDUE		SHEET NO.	REMARKS
			BOOK	PAGE					LAND	BLDG.	LEFT	RIGHT		
26 WL	Louise & Deane M. Richmond	I	131	231	160.00	6.51	6.615	0.000	6.615	-	23946	121.23	8,9	
26 WD	" " " " "	I					0.245	0.114	0.131	-			33,34	
26A-WD	" " " " "	I					1.568	-	1.568	-			8,9	
27 WL	Pearle Harper	I	1	16,77	210.43	4.85	8.976	0.143	8.833	-	10.349	183.53	9	Registered Land
27 WD	" "	I	80	201			1.460	0.390	1.070	-			9,33	
27 WD-1	" "	I					1.889	0.442	1.447	-			9,33,34	
27 X	" "	I					2.440	-	2.440	-			9,33,34	
27 Y	" "	I					0.571	-	0.571	-			9	
27 T	" "	I					0.048	-	0.048	-			9	Field Drive
27T-1	" "	I					0.022	-	0.022	-			33,34	
27WD-3	" "	I					0.401	-	0.401	-			9	
27 WL-1	Pearle Harper	I	158	259	116.20	0.81	2.979	0.000	2.979	-	111.561	-	10	
27 WD-2	" "	I	114	392			1.381	0.531	0.850	-			10,33,34	
27X-1	" "	I					1.549	-	1.549	-			33,34	
27 T-2	" "	I					0.020	-	0.020	-			33,34	Residence Drive
29 WL	Helen C. Slagle	I	165	345	188.00	2.08	2.557	0.143	2.414	-	80.25	82.478	9,10	
29 A-WL	" " "	I	153	139			19.138	0.232	18.906	-			10,11,12	
29 WD	" " "	I					1.155	0.258	0.897	-			10,33	
29 A-WD	" " "	I					0.111	0.036	0.075	-			9,10	
29 B-WD	" " "	I					1.145	0.374	0.771	-			12,35	
29 C-WD	" " "	I					1.027	0.408	0.619	-			12,35	
29 X	" " "	I					0.524	-	0.524	-			10	
29 Y	" " "	I					3.715	-	3.715	-			10,11,12,35	
29 T	" " "	I					0.019	-	0.019	-			35	Field Drive
29 B-T	" " "	I					0.015	-	0.015	-			35	Field Drive
29 C-T	" " "	I					0.037	-	0.037	-			35	Field Drive
30 WD	Gladys Campbell (Life Estate)	I	166	202	63.00	1.29	0.284	0.130	0.154	-	61.556		33	
31 WL	Katharine Higgins	I	169	81	203.21	1.85	20.897	0.237	20.660	-	7.392	171.902	12,13,14	
31 WD	" "	I					1.138	0.412	0.726	-			12,35	
31 A-WD	" "	I					1.010	0.330	0.680	-			12,35	
31 Y	" "	I					0.299	-	0.299	-			14	
31 T	" "	I					0.051	-	0.051	-			35	Field & Residence Drives
31 A-T	" "	I					0.010	-	0.010	-			35	Field Drive
31 B-WD	" "	I	169	81	60.00	0.493	0.161	0.104	0.057	-	59.450	-	35	
31 B-T	" "	I					0.012	-	0.012	-			35	Field Drive
32 WL	Sara J. Goodyear	I	143	307	122.50	1.57	0.563	0.000	0.563	-	120.221		13,14	
32 WD	" "	I					0.223	0.077	0.146	-			35	
32 T	" "	I					0.019	-	0.019	-			35	Residence Drive
32 A-Y	George L. M ^{rs} Murray	I	143	308	34.24	0.03	0.078	-	0.078	-	34.21		36	
33 WL	Levisa Yerion	I	160	129	135.66	2.93	11.272	0.000	11.272	-	37.93 (L.L.)	75.146	15,16	
33 A-WL	" "	I					10.160	1.678	8.482	-			17,18,20,21	
33 Y	" "	I					2.640	-	2.640	-			15,16	
33 A-Y	" "	I					2.585	-	2.585	-			18,36	
33 T	" "	I					0.867	-	0.867	-			18,21	Temporary U.S.R.-42
33A-T	" "	I					0.062	-	0.062	-			36	Build Drive (Crossing Glade Run)
32B-WL	Robert A. M ^{rs} Murray	I	143	309	122.50	0.60	10.150	0.000	10.150	-	51.988 (L.L.)	59.762	14,15	
32B-Y	" " "	I					1.381	-	1.381	-			14,15	

REV.	DATE	DESCRIPTION
HLK	2-17-67	Added Parcel 33A-T
HLK	2-17-67	Changed Parcel Series 32
HLK	2-17-67	Added Parcel 32B-WL, 32B-Y
LMT	5-22-67	Added Parcel 27B-WD
LMT	5-22-67	Changed 26X & 27X
	7-21-67	Revised parcel series 28 to 27

7
37

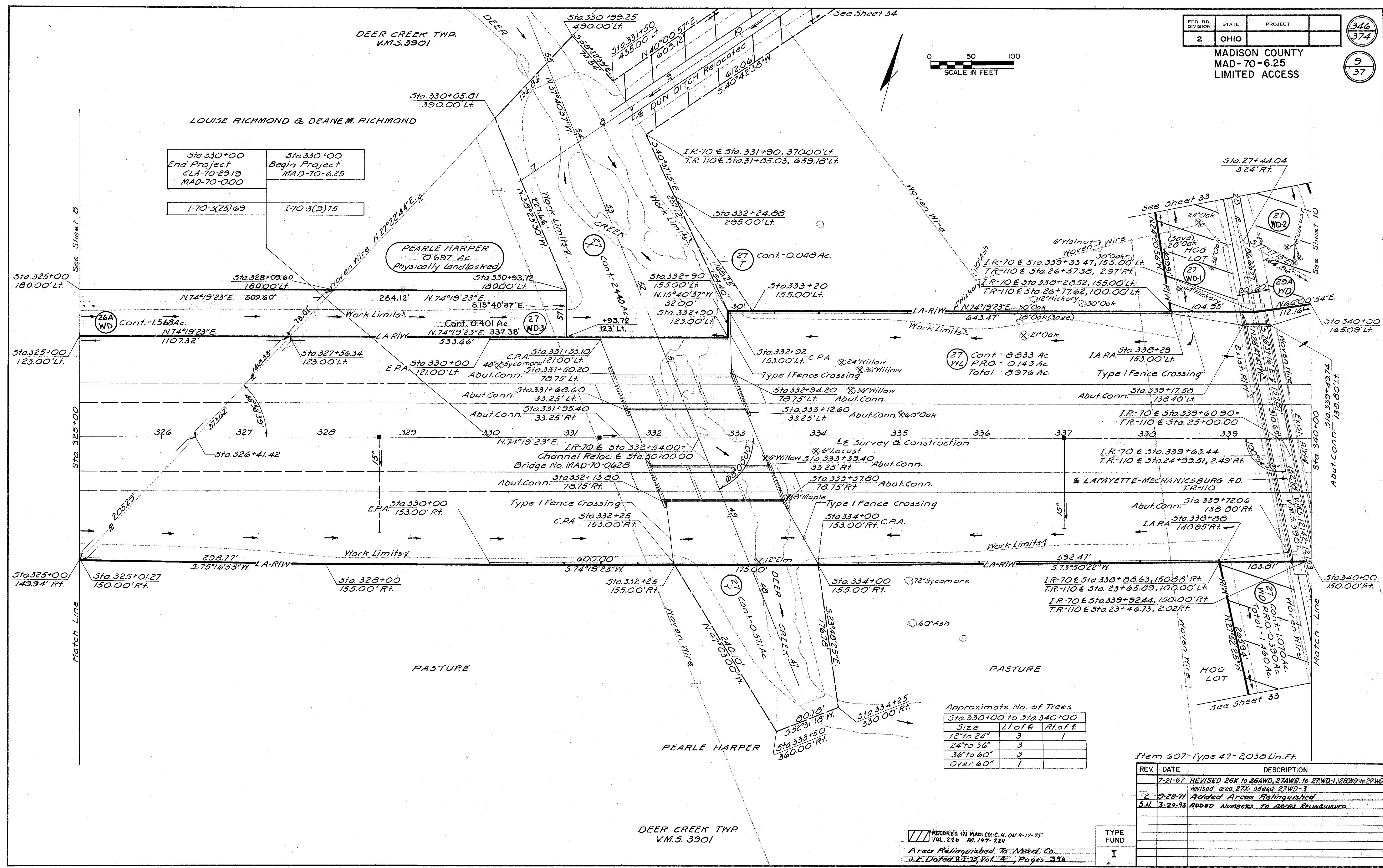
SUMMARY OF ADDITIONAL RIGHT OF WAY



																																QUANTITIES													
SHEET																																ITEM	QUANTITY	UNIT	DESCRIPTION										
9	10	11	12	13	14	15	16	17	18	19	20	21	22	23	24	25	26	27	28	29	30	31	32																						
2038	3,075	3,000	2,971	3,000	3,008	3,000	3,037	1,410	2,327	2,378	1,519	811	3,001	3,117	3,000	2,790	1,416	1,120	1,779	1,500	2,288	3,032	160	607	54,977	Lin.Ft.	Type 47 Fence																		

REV	DATE	DESCRIPTION
7-21-67		REVISED 26X TO 26AWD
3-25-68		Revised fence quantities sheets 25, 26 & 27 total

TYPE
FUND
I



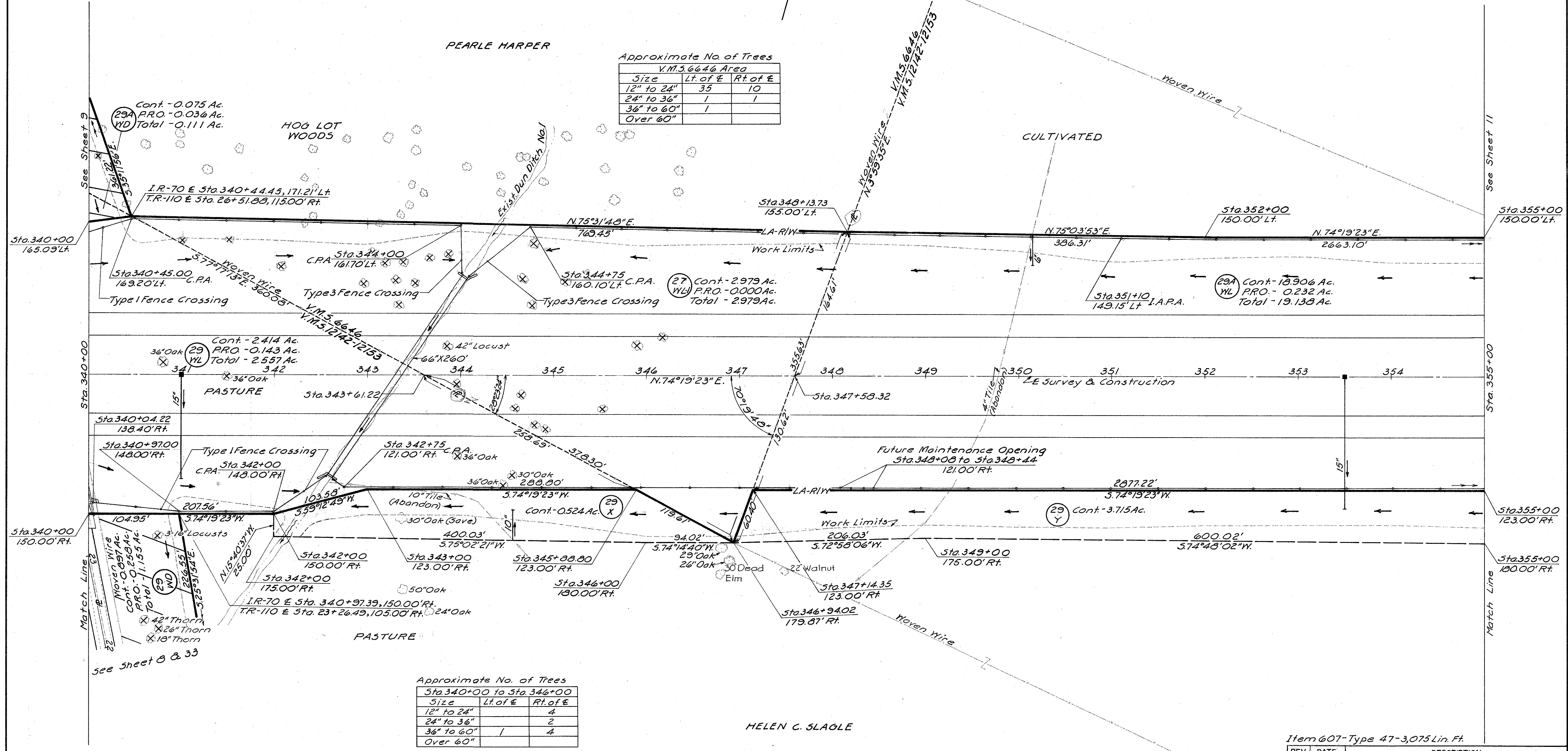
DEER CREEK TWP
V.M. 5.6646

0 50 100
SCALE IN FEET

DEER CREEK TWP
V.M. 5.12142-12153

Approximate No. of Trees

Size	Lt. of E	Rt. of E
12" to 24"	35	10
24" to 36"	1	1
36" to 60"	1	
Over 60"		



Approximate No. of Trees

Size	Lt. of E	Rt. of E
12" to 24"	4	
24" to 36"	2	
36" to 60"	1	4
Over 60"		

Item 607-Type 47-3,075 Lin. Ft.

REV.	DATE	DESCRIPTION
1	1-21-67	Revised 28WL to 27WL-I
2	9-28-71	Added Areas Relinquished
3	3-29-93	Added Numbers to AREAS RELINQUISHED

RECORDED IN MAD. CO. C.H. ON 9-17-75
Vol. 226 P.G. 197-224
Area Relinquished To Mad. Co.
J.E. Dated 8-5-75, Vol. 4, Pages 396

TYPE
FUND
I

DEER CREEK TWP
V.M. 5.12142-12153

DEER CREEK TWP.
V.M. 3.12142-12153

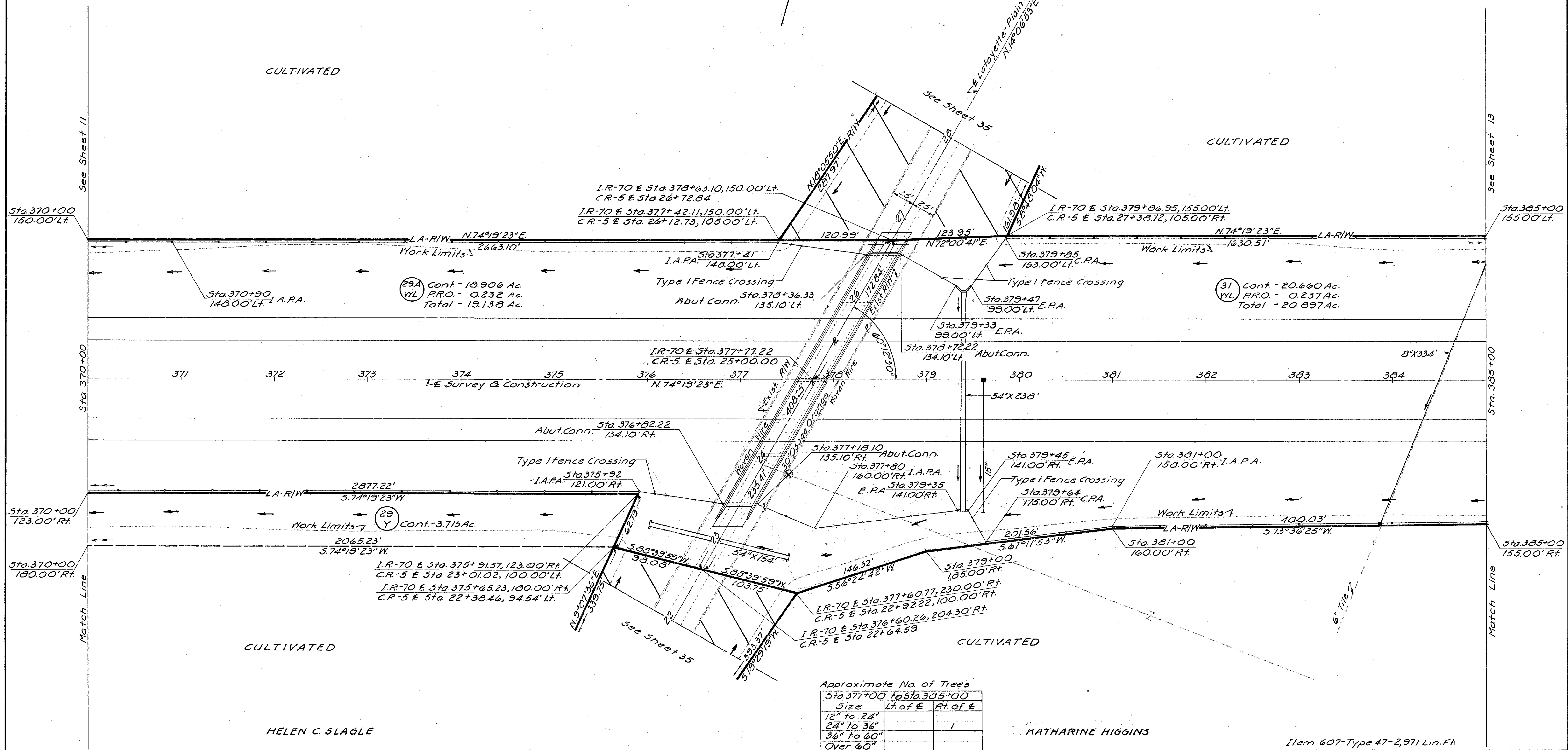
0 50 100
SCALE IN FEET

FED. RD. DIVISION	STATE	PROJECT
2	OHIO	

MADISON COUNTY
MAD-70-6.25
LIMITED ACCESS

349
374

12
37



Approximate No. of Trees		
Size	Lt of E	Rt of E
12" to 24"		
24" to 36"		1
36" to 60"		
Over 60"		

Item 607-Type 47-2,971 Lin. Ft.

REV.	DATE	DESCRIPTION
1	3-29-71	Added Areas Relinquished
S.N.	3-29-93	ADDED NUMBERS TO AREAS RELINQUISHED

DEER CREEK TWP.
V.M. 3.12142-12153

RECORDED IN MAD. CO. CH. ON 9-17-75
VOL. 226 PG. 197-224
Area Relinquished To Mad. Co.
J.E. Dated 8-8-76, Vol. 4, Pages 336

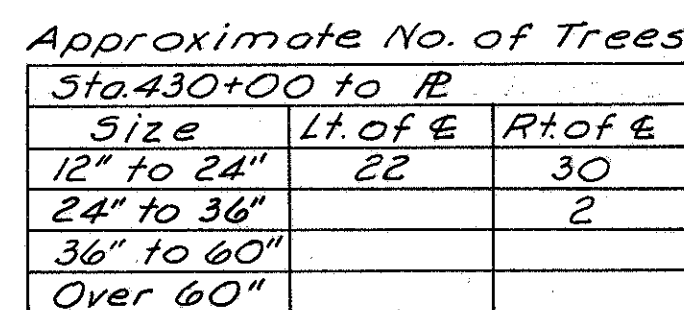
TYPE
FUND
I

STA. 370+00 TO STA. 385+00 R/W



THE HUNTINGTON NATIONAL BANK
OF COLUMBUS

Size	Lt of E	Rt of
12" to 24"		4
24" to 36"		
36" to 60"		
Over 60"		



CURVE DATA
PI Sta. 437+98.79
 $\Delta = 8^{\circ}09'41''$ Rt.
 $D = 0^{\circ}28'00''$
 $R = 12,277.67'$
 $L = 1,748.87'$
 $T = 875.92'$
 $E = 31.21'$

Item 607-Type 47-3,037 Lin. Ft.

[illegible]

THE HUNTINGTON NATIONAL BANK
OF COLUMBUS

PARTIALLY CULTIVATED

CULTIVATED

Approximate No. of Trees

Sta. 445+00 to R		
Size	Lt. of E	Rt. of E
12" to 24"	1	
24" to 36"	1	
36" to 60"	5	
Over 60"		

Item 607-Type 47- 1,610 Lin.Ft. \angle Sta 459+88.97

DEER CREEK TWP
V.M.S. 7029
THE HUNTINGTON NATIONAL BANK
OF COLUMBUS
PARTIALLY CULTIVATED

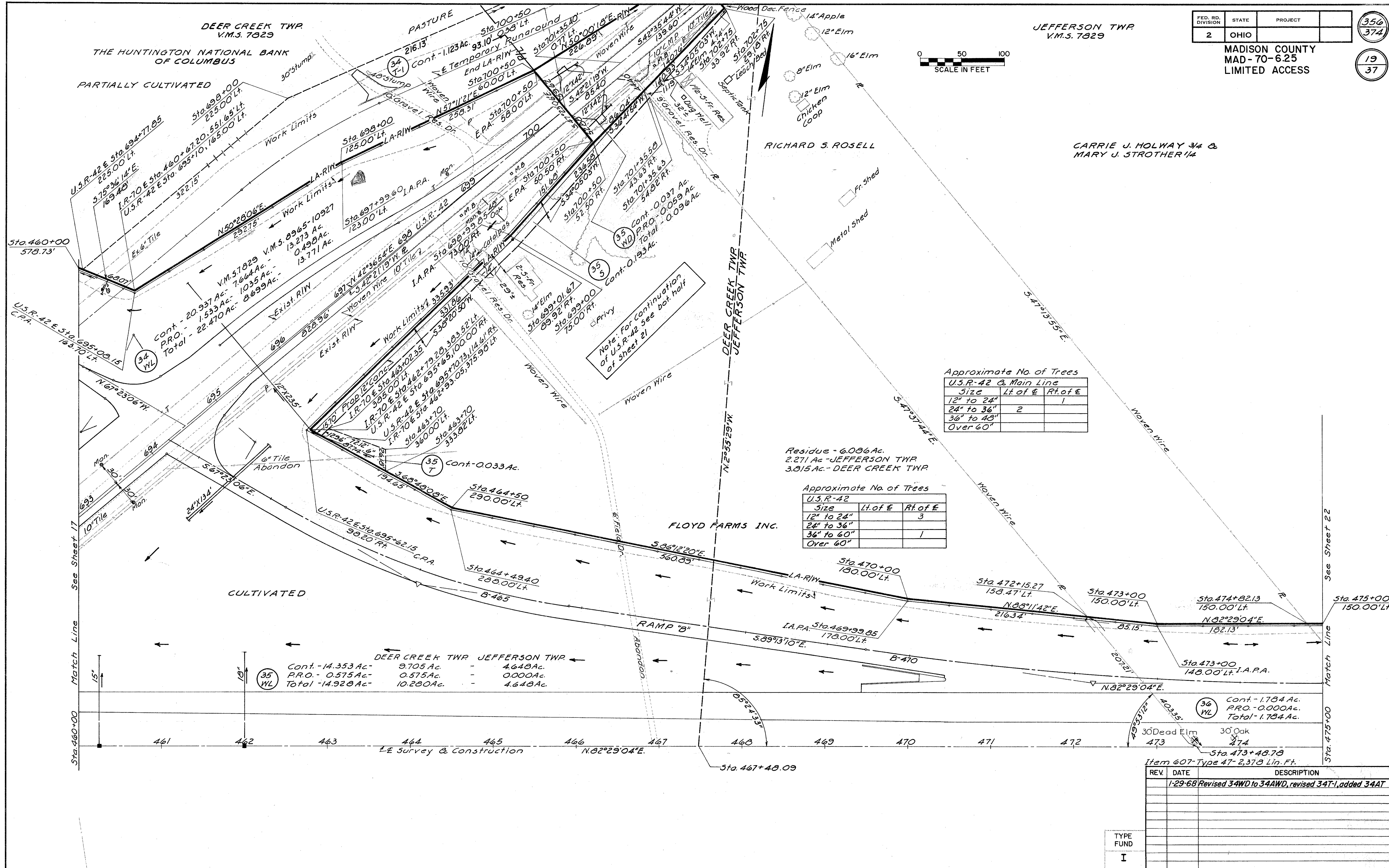
JEFFERSON TWP
V.M.S. 7029

FED. RD. DIVISION	STATE	PROJECT
2	OHIO	

MADISON COUNTY
MAD-70-6.25
LIMITED ACCESS

356
374

19
37



Approximate No. of Trees
U.S.R-42 & Main Line

Size	Lt. of E	Rt. of E
12" to 24"		1
24" to 36"	2	
36" to 48"		
Over 60"		

Approximate No. of Trees
U.S.R-42

Size	Lt. of E	Rt. of E
12" to 24"		3
24" to 36"		
36" to 60"		1
Over 60"		

DEER CREEK TWP JEFFERSON TWP

	DEER CREEK TWP	JEFFERSON TWP
Cont.	14.353 Ac.	9.705 Ac.
P.R.O.	0.575 Ac.	0.575 Ac.
Total	14.928 Ac.	10.280 Ac.

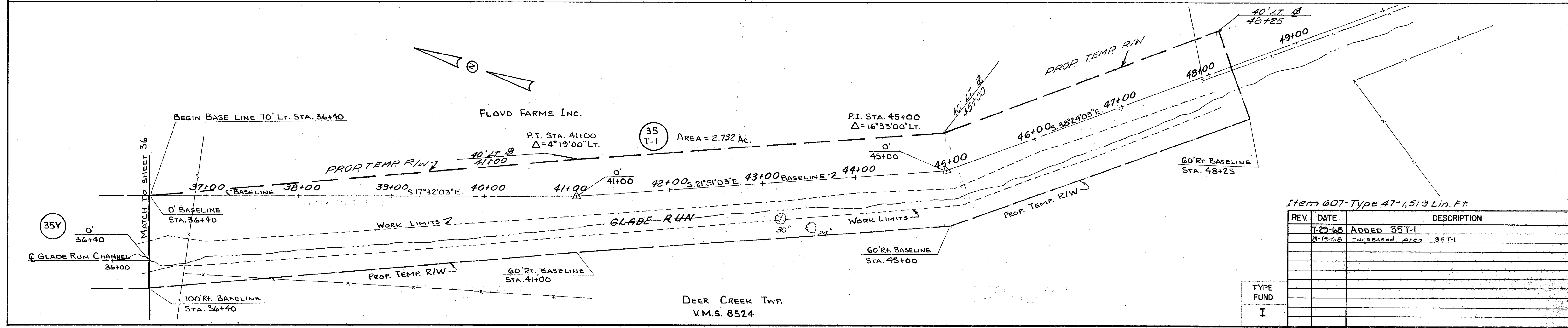
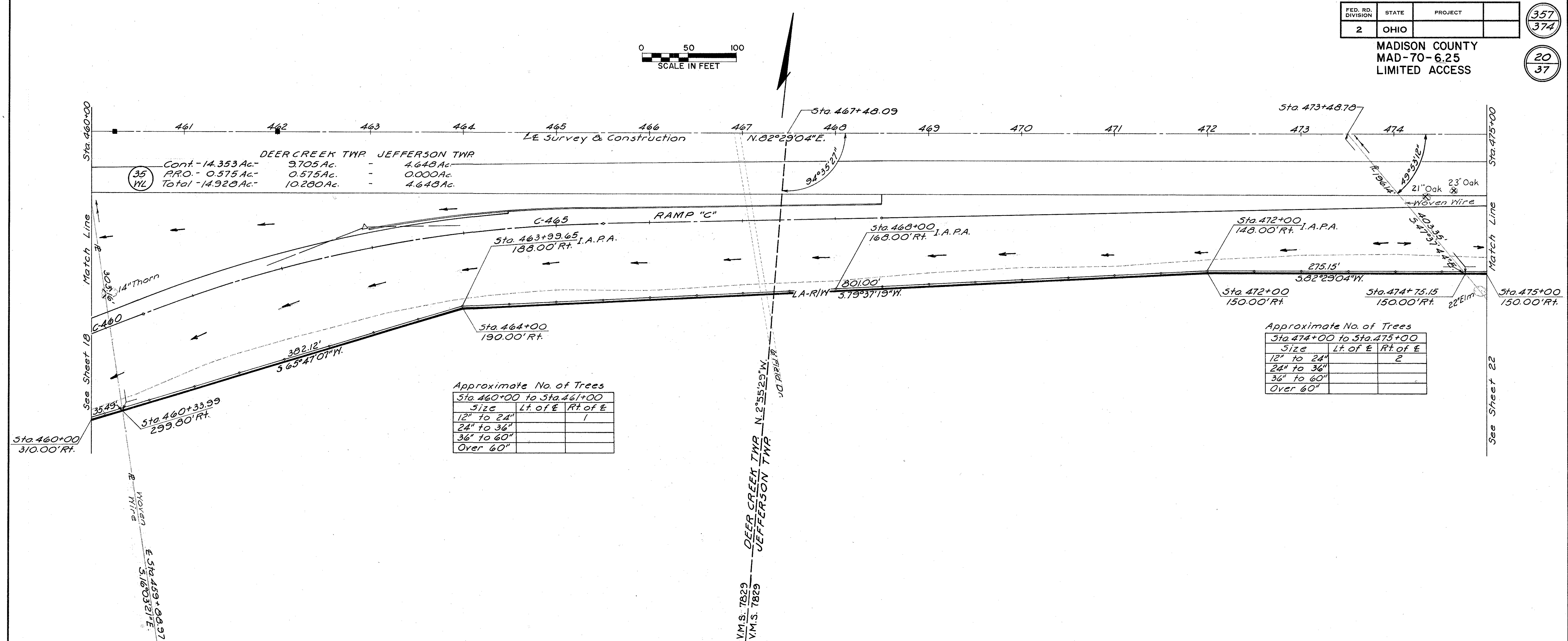
36 WL

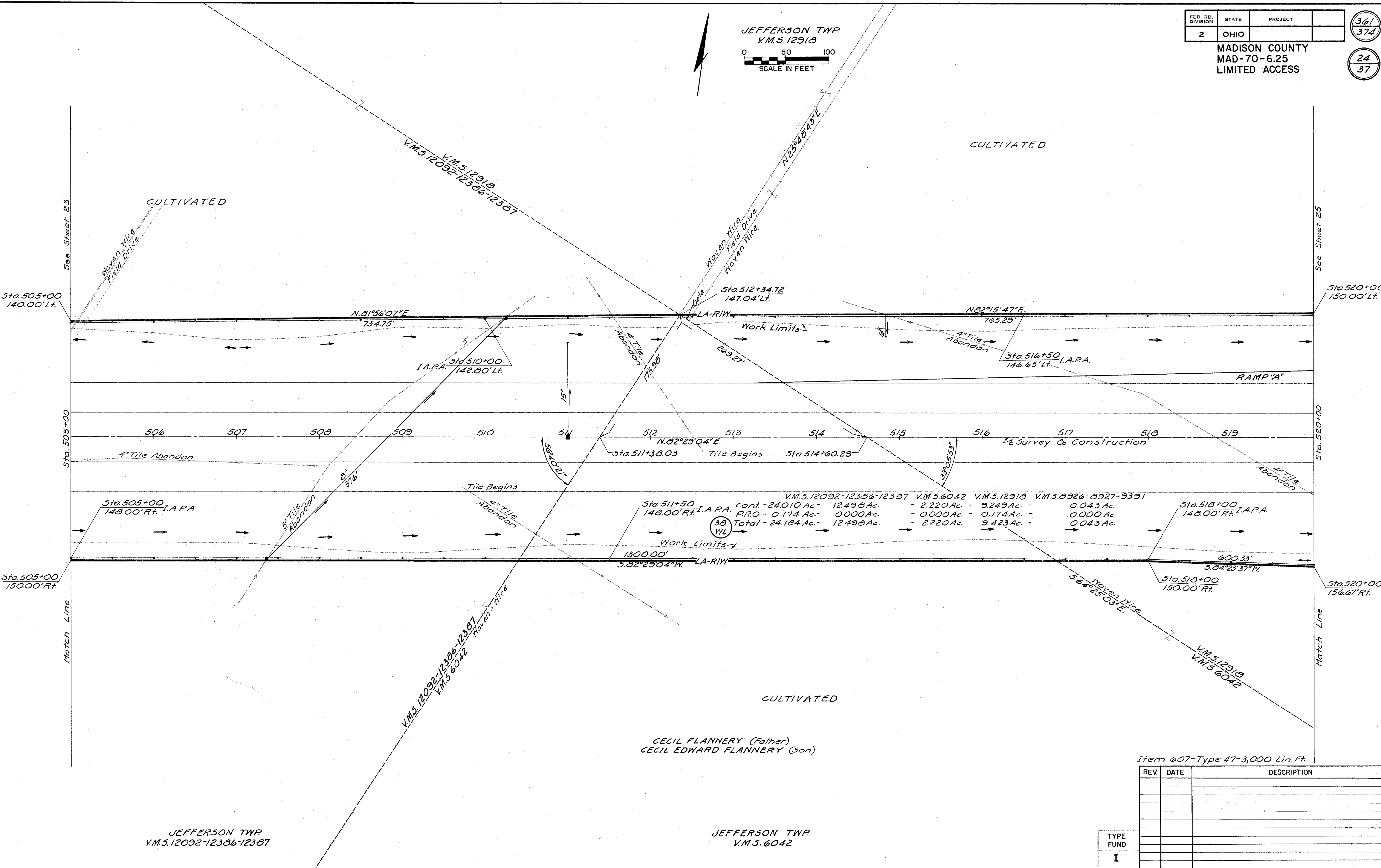
Cont.	1.784 Ac.
P.R.O.	0.000 Ac.
Total	1.784 Ac.

Item 607-Type 47- 2,378 Lin. Ft.

REV.	DATE	DESCRIPTION
1	29-68	Revised 34WD to 34AWD, revised 34T-1, added 34AT

TYPE FUND
I

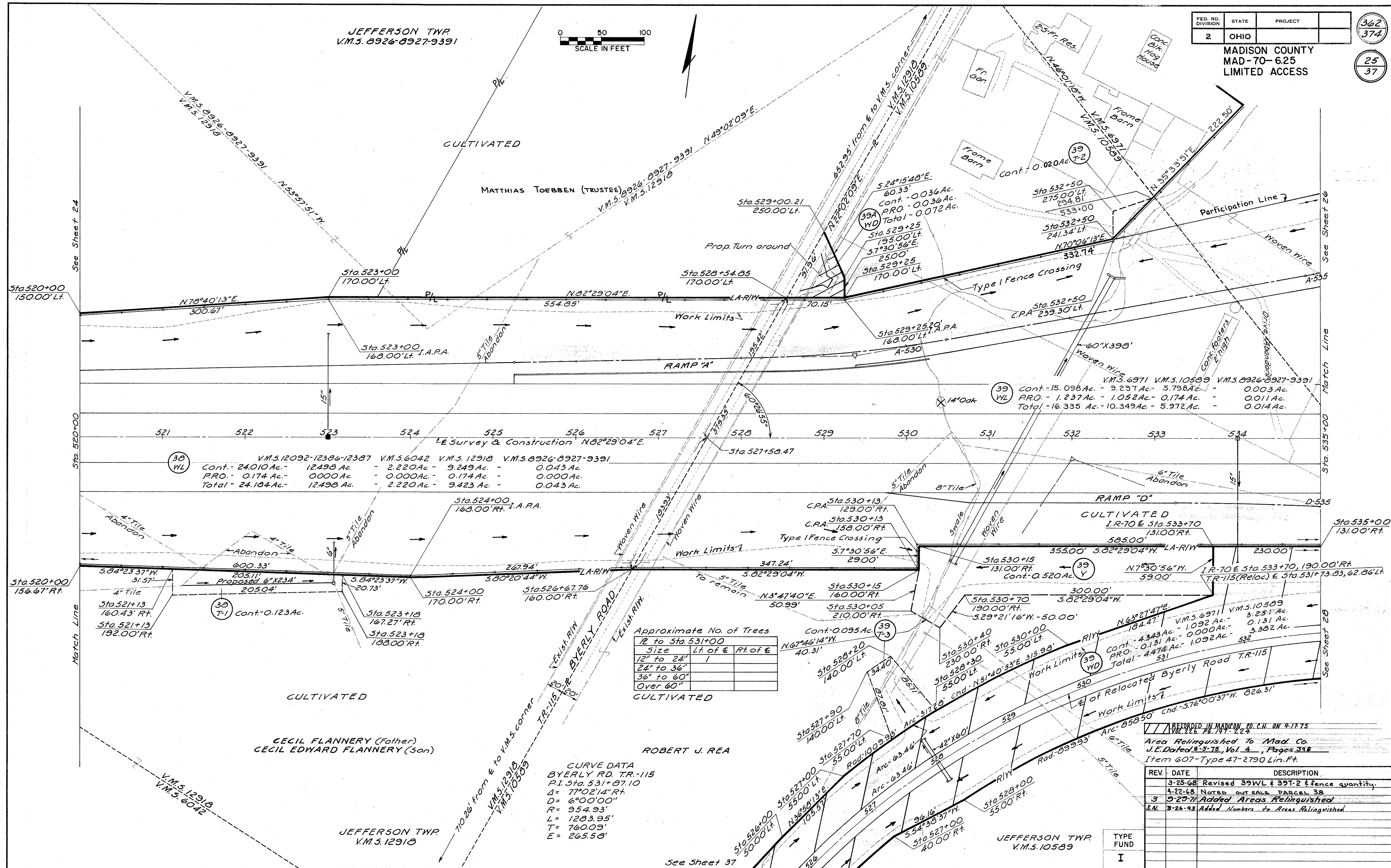




Item 607-Type 47-3,000 Lin.Ft.

REV.	DATE	DESCRIPTION

TYPE FUND
I



JEFFERSON TWP
V.M.S. 6971

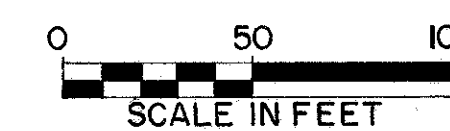
JEFFERSON TWP
V.M.S. 4742

FED. RD. DIVISION	STATE	PROJECT
2	OHIO	

MADISON COUNTY
MAD-70-6.25
LIMITED ACCESS

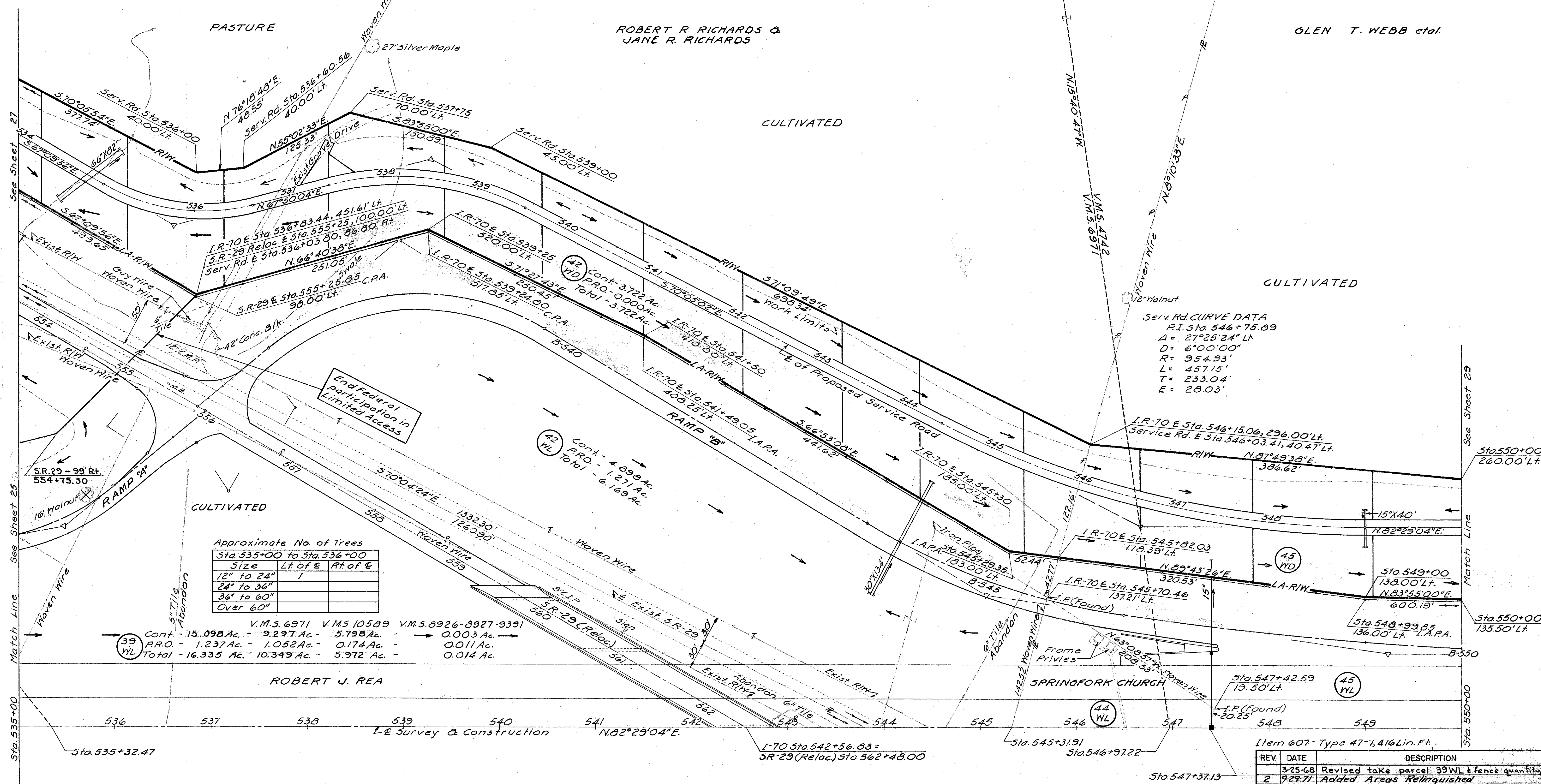
363
374

26
37



ROBERT R. RICHARDS &
JANE R. RICHARDS

GLEN T. WEBB et al.



Approximate No. of Trees		
Size	Lt. of E	Rt. of E
12" to 24"	1	
24" to 36"		
36" to 60"		
Over 60"		

	V.M.S. 6971	V.M.S. 10589	V.M.S. 8926-8927-9391
Cont.	15.098 Ac.	9.297 Ac.	5.798 Ac.
P.R.O.	1.237 Ac.	1.052 Ac.	0.174 Ac.
Total	16.335 Ac.	10.349 Ac.	5.972 Ac.

ROBERT J. REA

RECORDED IN MAD. CO. C.H.D.N. 9-17-75
VOL. 116 PG. 191-224

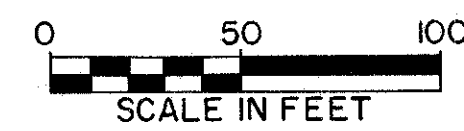
Area Relinquished To Mad. Co.
J.E. Dated 8-7-75, Vol. 4, Pages 396

TYPE
FUND
I

REV.	DATE	DESCRIPTION
1	3-25-68	Revised take parcel 39WL & fence quantity
2	9-29-77	Added Areas Relinquished
3	3-29-93	ADDED NUMBERS TO AREAS RELINQUISHED

STA. 535+00 TO STA. 550+00 LT. R/W

JEFFERSON TWP
V.M. 5. 8926-8927-9391



JEFFERSON TWP
V.M. 5. 6971

FED. RD. DIVISION	STATE	PROJECT
2	OHIO	

MADISON COUNTY
MAD-70-6.25
LIMITED ACCESS

364
374

27
37

PASTURE

CARL R. & WILMA J. LEMON

ROBERT R. RICHARDS &
JANE R. RICHARDS

SERVICE ROAD
Curve Data
P.I. Sta. 538+53.00
Δ = 42°04'44"
D = 20°00'00"
R = 286.48'
T = 210.39'
E = 20.46'

SERVICE ROAD
Curve Data
P.I. Sta. 535+84.61
Δ = 45°00'00"
D = 28°00'00"
R = 204.63'
T = 160.71'
E = 16.86'

SERVICE ROAD
Curve Data
P.I. Sta. 531+46.27
Δ = 68°30'51" Rt.
R = 100'
T = 119.58'
E = 30.72'

Cont. - 0.254 Ac.
P.R.O. - 0.080 Ac.
WD Total - 0.334 Ac.
I.P. Found

Ch. N. 82°17'28"E, 113.43'
R = 110'
Arc = 119.17'

Cont. - 3.722 Ac.
P.R.O. - 0.000 Ac.
WD Total - 3.722 Ac.
LA-R/W

Area-Non-B.P.R.
Participation
in Limited Access
Cont. - 0.495 Ac.
P.R.O. - 0.585 Ac.
Total - 1.080 Ac.

Cont. - 4.898 Ac.
P.R.O. - 1.271 Ac. WL
Total - 6.169 Ac.

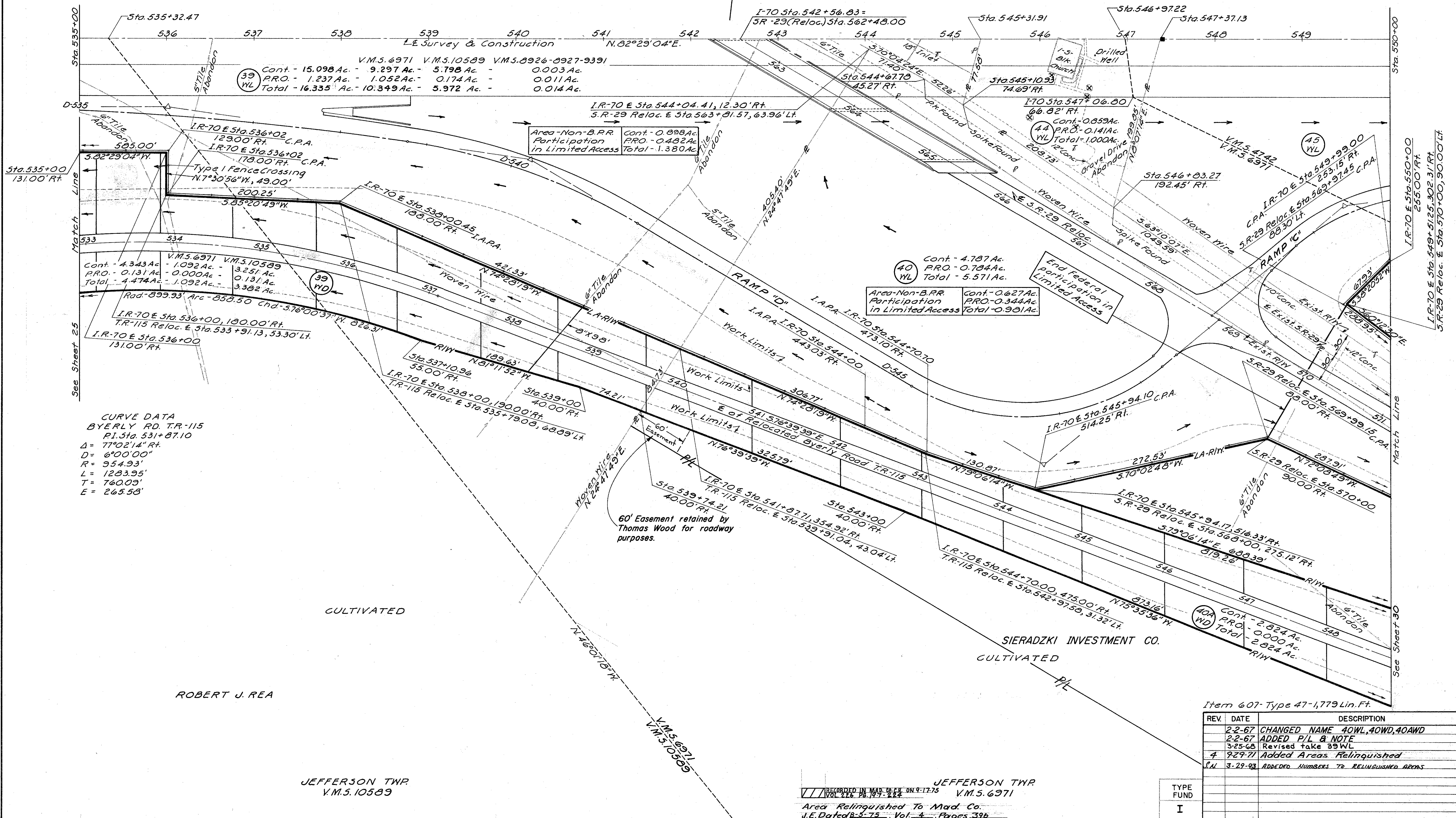
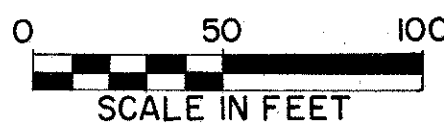
End Federal
Participation in
Limited Access

RECORDED IN MAD. CO. C.M. ON 9-17-75
VOL. 226 PG. 197-224
Area Relinquished To Mad. Co.
J.E. Dated 8-5-75, Vol. 4, Pages 396

REV.	DATE	DESCRIPTION
1	10-20-67	Revised 41WD
2	3-25-68	Revised take parcels 39WL, 39T-2 & 39T-4 also fence quantity.
3	9-29-71	Added Areas Relinquished
4	3-29-93	Added numbers to areas relinquished

Approximate No. of Trees		
Size	Lt. of E	Rt. of E
12" to 24"		5
24" to 36"		2
36" to 60"		1
Over 60"		

EXIST. S.R-29
Curve Data
P.I. Sta. 551+22.29
Δ = 2°59'00"
D = 1°00'00"
R = 5729.58'
T = 149.21'
L = 298.33'
E = 1.95'



CURVE DATA
BYERLY RD. T.R-115
P.I. Sta. 531+87.10
Δ = 77°02'14" Rt.
D = 6°00'00"
R = 954.93'
L = 1283.95'
T = 760.03'
E = 265.53'

ROBERT J. REA

JEFFERSON TWP.
V.M.S. 10589

RECORDED IN MAD. CO. ON 9-17-75
Vol. 116 Pg. 104-222
JEFFERSON TWP.
V.M.S. 6971
Area Relinquished To Mad. Co.
J.E. Dated 8-5-75, Vol. 4, Pages 336

Item 607- Type 47-1,779 Lin.Ft.

REV.	DATE	DESCRIPTION
2-2-67		CHANGED NAME 40WL, 40WD, 40AWD
2-2-67		ADDED P/L & NOTE
3-25-68		Revised take 39WL
4	9-29-71	Added Areas Relinquished
S.M.	3-29-83	ADDED NUMBERS TO RELINQUISHED AREAS

TYPE	
FUND	
I	

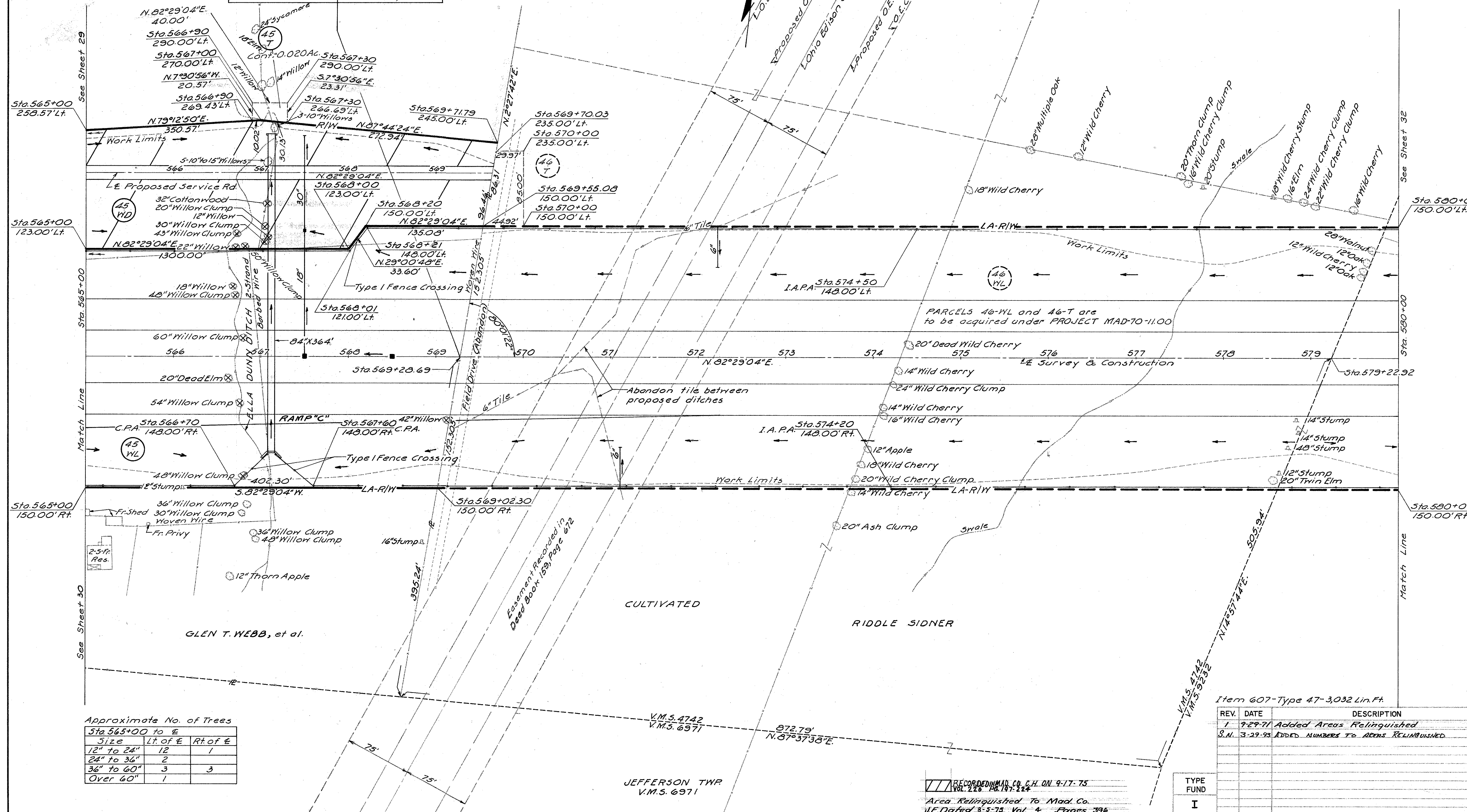
JEFFERSON TWP
V.M.S. 4742

0 50 100
SCALE IN FEET

Sta 569+28.69
End Acquisition
for MAD-70-625

Sta 569+28.69
Begin Acquisition
for MAD-70-11.00

I-70-3(B) R/W & P.E. I-70-3(B) R/W & P.E.



Approximate No. of Trees

Size	Lt. of E	Rt. of E
12" to 24"	12	1
24" to 36"	2	
36" to 60"	3	3
Over 60"	1	

Item 607-Type 47-3,032 Lin. Ft.

REV.	DATE	DESCRIPTION
1	9-29-71	Added Areas Relinquished
S.N.	3-29-93	ADDED NUMBERS TO AREAS RELINQUISHED

RECORDED IN MAD. CO. C.H. ON 9-17-75
Vol. 22, Pg. 187-224
Area Relinquished To Mad. Co.
J.E. Dated 3-3-75, Vol. 4, Pages 396



DEER CREEK TWP
V.M.S. 3901

DEER CREEK TWP
V.M.S. 4751

DEER CREEK TWP
V.M.S. 6646

FED. RD. DIVISION	STATE	PROJECT
2	OHIO	

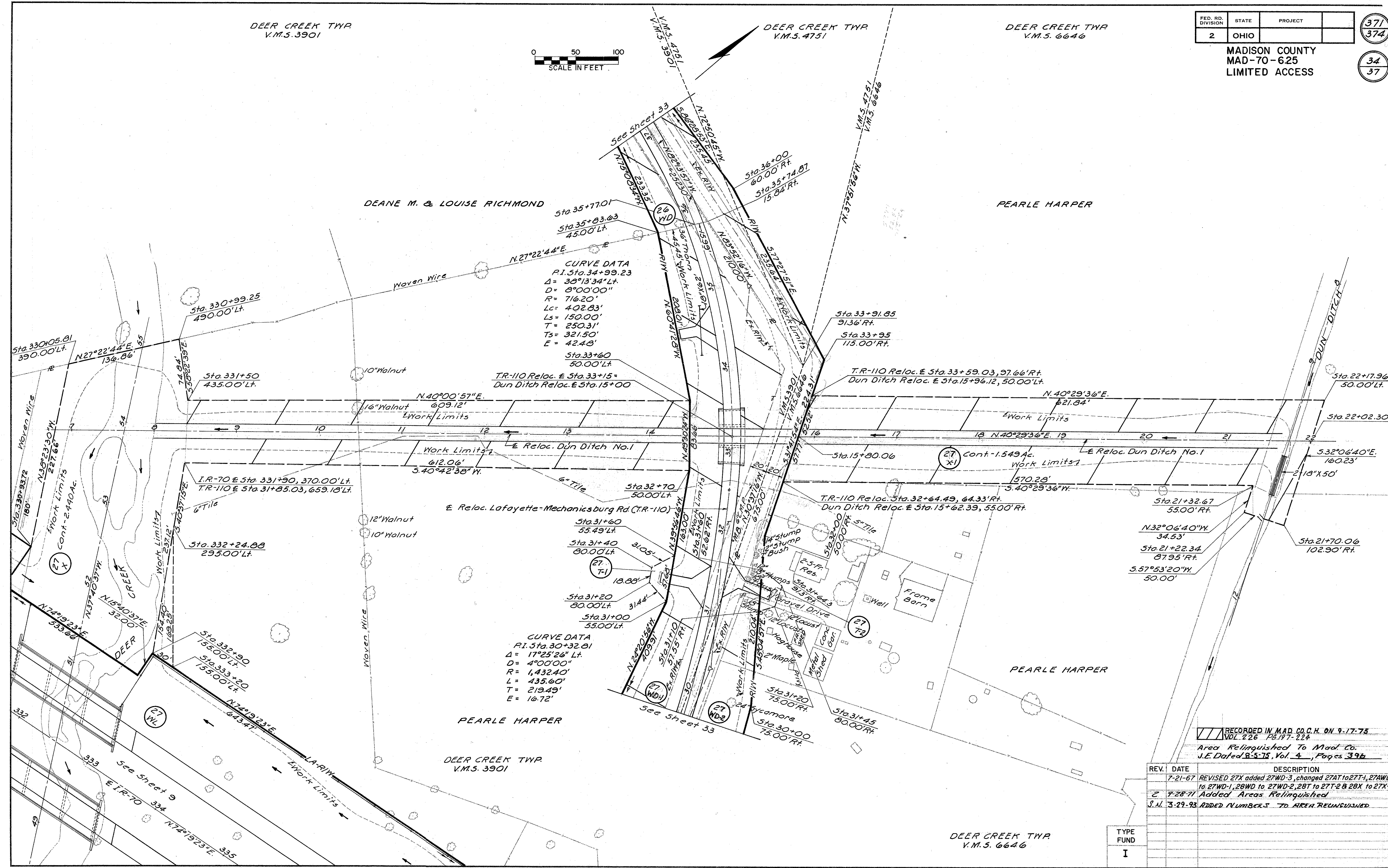
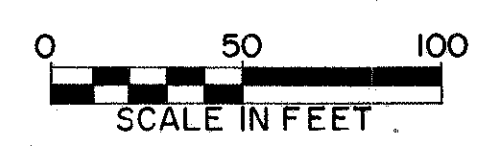
MADISON COUNTY
MAD-70-625
LIMITED ACCESS

371

374

34

37

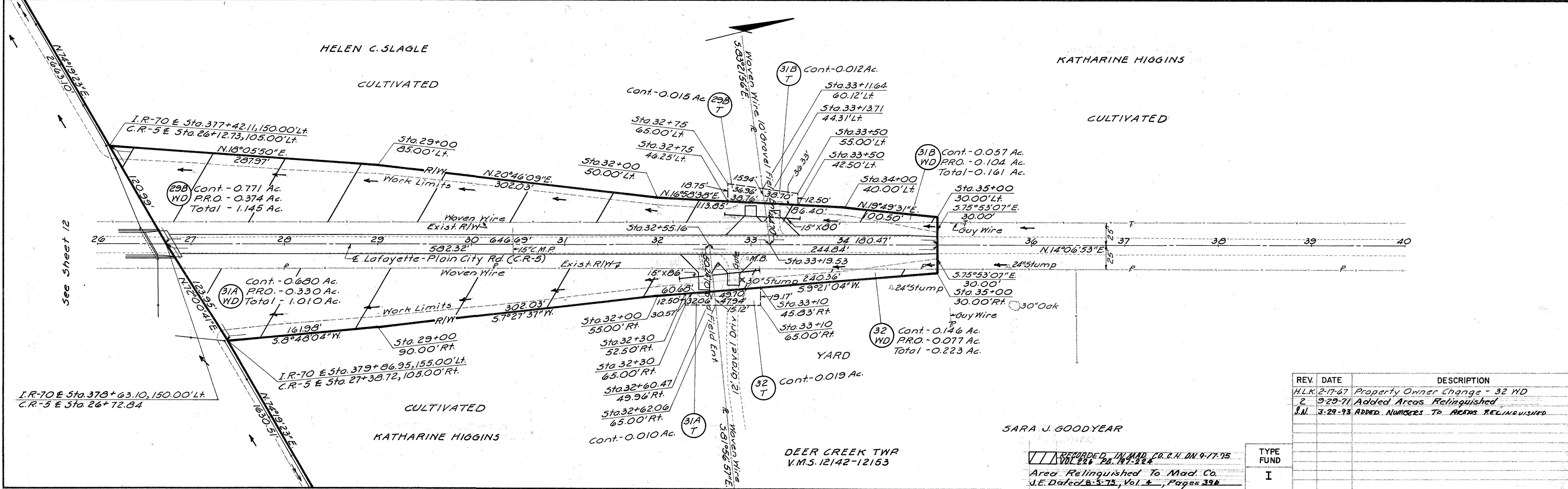
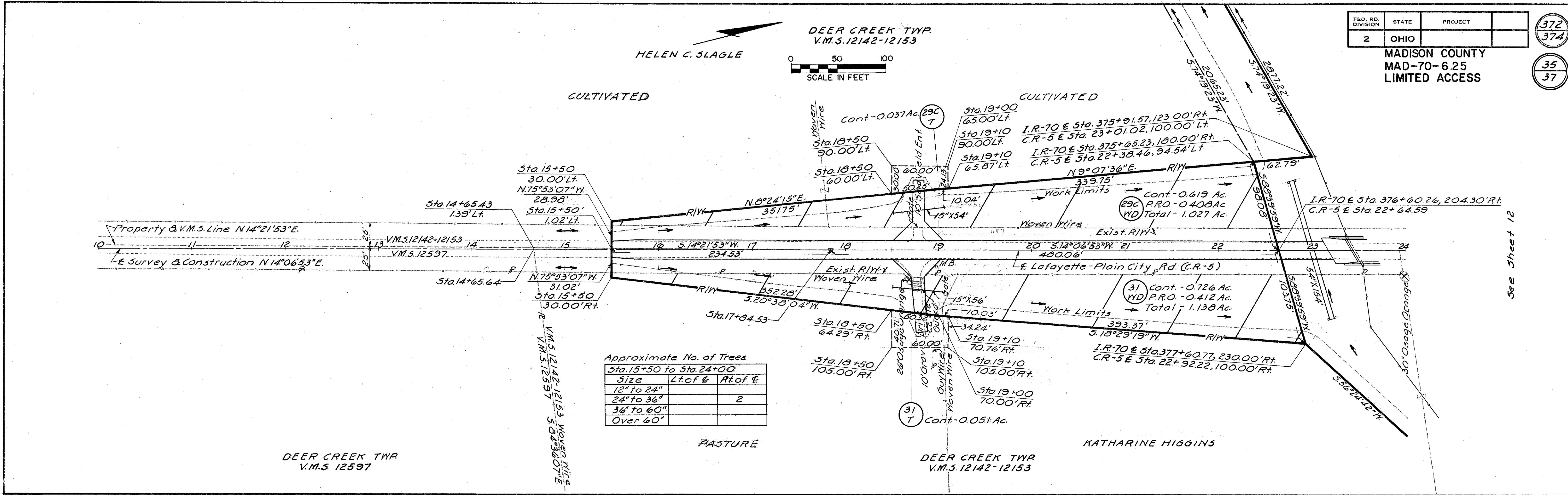


RECORDED IN MAD. CO. C.H. ON 9-17-75
VOL. 226, PG. 197-224
Area Relinquished To Mad. Co.
J.E. Dated 8-5-75, Vol. 4, Pages 396

REV.	DATE	DESCRIPTION
7-21-67	REVISED	27X added 27WD-3, changed 27AT to 27T-1, 27AWD to 27WD-1, 28WD to 27WD-2, 28T to 27T-2 & 28X to 27X-1
7-28-71	Added	Areas Relinquished
3-29-93	Added	NUMBERS TO AREA RELINQUISHED

TYPE FUND
I

DEER CREEK TWP
V.M.S. 6646

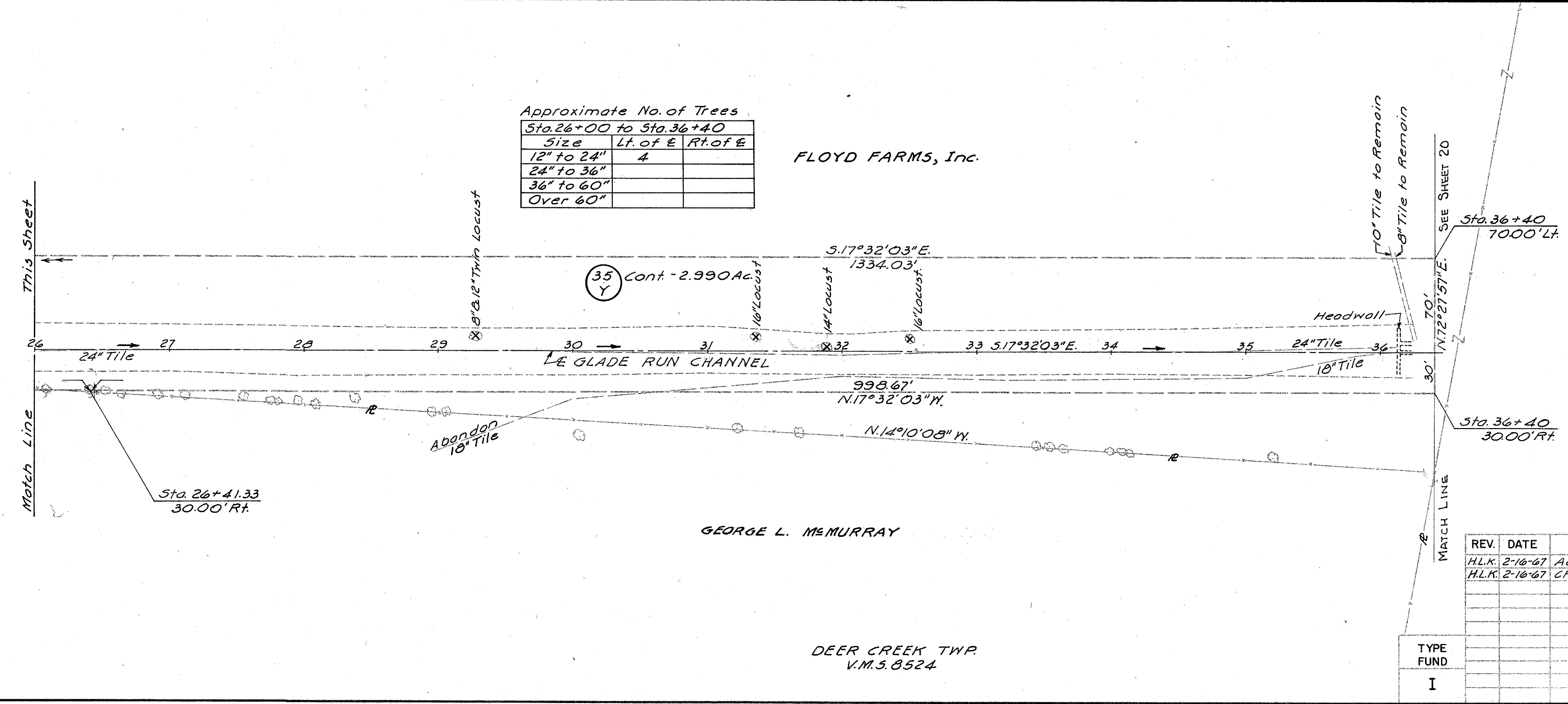
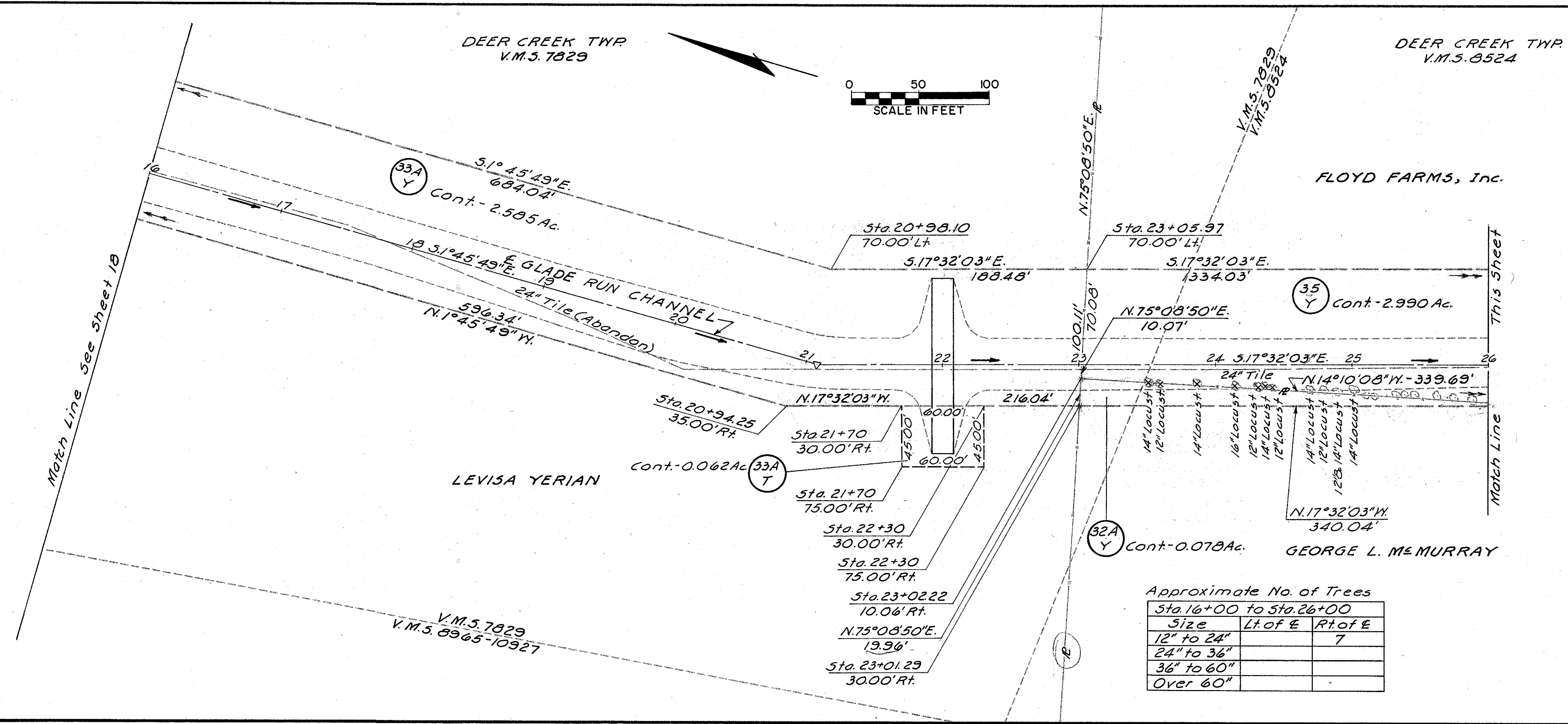


REV	DATE	DESCRIPTION
1	2-17-67	Property Owner Change - 32 WD
2	3-29-71	Added Areas Relinquished
3	3-29-93	Added Numbers To Areas Relinquished

TYPE

FUND

I



JEFFERSON TWP
V.M.S. 6042

JEFFERSON TWP
V.M.S. 12918

FED. RD. DIVISION	STATE	PROJECT
2	OHIO	

MADISON COUNTY
MAD-70-6.25
LIMITED ACCESS

374
374

37
37

0 50 100
SCALE IN FEET

CECIL FLANNERY (Father)
CECIL EDWARD FLANNERY (Son)

CULTIVATED

CULTIVATED

CULTIVATED

ROBERT J. REA

JEFFERSON TWP
V.M.S. 10589

CURVE DATA
BYERLY RD. T.R. 115
P.I. Sta. 531+87.10
 $\Delta = 77^{\circ}02'14''$ Rt.
 $D = 6^{\circ}00'00''$
 $R = 954.93'$
 $L = 1203.95'$
 $T = 760.09'$
 $E = 265.58'$

REV.	DATE	DESCRIPTION
1	9-29-71	Added Areas Relinquished
S.M.	3-29-93	Added ARRS REUNQUISHED WITH NUMBERS

TYPE
FUND

I

RECORDED IN MAD. CO. O.H. ON 9-17-75
Vol. 226 Pg. 17-22

Area Relinquished To Mad. Co.
J.E. Dated 8-5-75, Vol. 4, Pages 396

RELOC. T.R. 115-BYERLY ROAD R/W